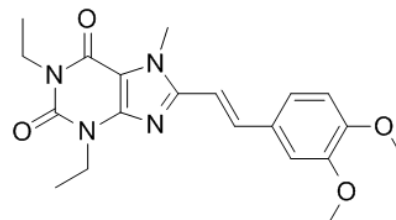


**Product Name** : Istradefylline  
**Cat. No.** : PC-42728  
**CAS No.** : 155270-99-8  
**Molecular Formula** : C<sub>20</sub>H<sub>24</sub>N<sub>4</sub>O<sub>4</sub>  
**Molecular Weight** : 384.429  
**Target** : Adenosine Receptor  
**Solubility** : DMSO: < 6 mg/mL



## Biological Activity

Istradefylline (KW6002) is a potent and highly selective **A2A receptor** antagonist with K<sub>i</sub> of 2.2 nM. KW6002 significantly increases the total counts of turning induced by apomorphine at doses 1 mg/kg, p.o. KW6002 also potentiates the rotational behavior induced by L-DOPA at a dose of 3 mg/kg, p.o.

## References

- Koga K, et al. *Eur J Pharmacol.* 2000 Nov 24;408(3):249-55.  
Chen JF, et al. *J Neurosci.* 2001 May 15;21(10):RC143.  
Ochi M, et al. *Neuroscience.* 2000;100(1):53-62.

**Caution: Product has not been fully validated for medical applications. Lab Use Only!**

E-mail: tech@probechem.com